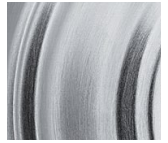


## DANE

### Box Pack Specifications



SATIN CHROME

### AVAILABLE FUNCTIONS:



Passage



Privacy



Entry



Inactive

DANE

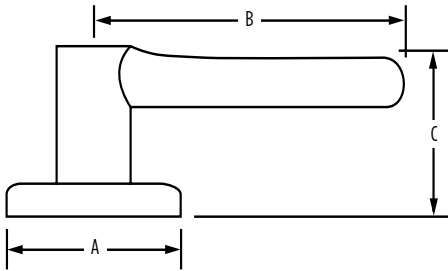
26D  
Satin Chrome

|          |                          |
|----------|--------------------------|
| Passage  | <input type="checkbox"/> |
| Privacy  | <input type="checkbox"/> |
| Entry    | <input type="checkbox"/> |
| Inactive | <input type="checkbox"/> |



## SPECIFICATIONS

|                       |  |
|-----------------------|--|
| <b>Door Prep</b>      | Cross Bore 2-1/8" Edge Bore 1"<br>Latch Face 1" x 2-1/4"           |
| <b>Backset</b>        | Adjustable to 2-3/8" or 2-3/4"                                     |
| <b>Door Thickness</b> | 1-3/8" - 1-3/4" doors standard.<br>2-1/4" doors optional           |
| <b>Cylinder</b>       | SmartKey   |
| <b>Faceplates</b>     | 1" x 2-1/4". Includes square corner, radius corner and drive-in    |
| <b>Strikes</b>        | 2-1/4" full lip. Includes square corner and radius corner          |
| <b>Bolt</b>           | 1/2" throw. Nickel plated  |
| <b>Door Handing</b>   | Reversible for right or left-hand doors                            |
| <b>ANSI/BHMA</b>      | A156.2 Grade 2   |
| <b>ADA</b>            | Functions GLA 101, GLA 12 satisfies section 4.13.9 ADA Requirement |
| <b>ASTM</b>           | All Weiser product meets ASTM E 331 water penetration testing      |



| Dimensions | A      | B        | C      | C (Keyed) |
|------------|--------|----------|--------|-----------|
| Dane       | 2 5/8" | 3 11/16" | 2 1/2" |           |

## WARRANTY:

Weiser™ products provide a "Lifetime Mechanical Warranty" that covers all defects in material and workmanship. For more information, please visit [ca.weiserlock.com/en/warranty/](http://ca.weiserlock.com/en/warranty/).